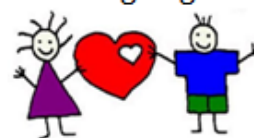


Growing Together Family Resource Centre **Fee schedule- Sept 1, 2020**

	Market Rate Reduction		
	Full Day	MRR Rate	Half day (5hr) MRR Rate
INFANT PROGRAM	(\$45.95 - \$10.00)	\$35.95	n/a
TODDLER PROGRAM	(\$42.45 - \$10.00)	\$32.45	(\$26.70 - \$5.00) \$21.70
ELP/PRESCHOOL PROGRAM	(\$41.35 - \$10.00)	\$31.35	(\$26.70 - \$5.00) \$21.70
JK/K PROGRAM	(\$39.25)		(\$26.00)
SCHOOL AGE PROGRAM	(\$38.70)		(\$26.00)
BEFORE/AFTER SCHOOL		\$ 6.65 /hr first hour am and first hour pm then will be charged by the 1/4 hour after that	
BREAKFAST (before 7:45 am)		\$ 1.25/meal	
Preschool (ELP) not available at this time		\$ 17.00 (credit 9 – 11:30 & 1:30 – 4)	
EARLY LEARNING PROGRAM (ELP)		Free for nursery school; \$ 9.70 for ½ day	
REGISTRATION FEE		\$ 30.00 (non-refundable)	
PENALTY Late or Early FEE		\$ 20.00	
NSF CHARGE		\$ 20.00	
LATE SCHEDULE ADMIN FEE		\$ 10.00	

Growing Together



Family Resource Centre Inc.

N/A

To schedule for all programs: To guarantee space, parents must submit their child's written/or on line schedule (at least two full days or three half/week) & (fdk,schoolage three sessions/week), www.gtfrc.org payment by 12 noon WEDNESDAY, for the following week. Booking may be done on a 15 min. interval e.g. 8:45am – 5:15pm. Regularly enrolled family schedules received after the Wednesday noon deadline will be charged a \$10 administration fee. Requests for additional hours will be processed based on availability of space and staffing. **If there is a holiday the schedule deadline moves ahead a day.

Reserve Fees: If your child does not attend the minimum required, families can maintain their full-time enrolment status by paying a "reserve fee".

- \$45.95 – infant & \$42.45 - Toddler – & \$41.35 - Preschool per session
- \$ 6.65 - JK/K & school aged per session during school year
- \$39.25 – JK/K & \$38.70 - school aged per session during school holidays

Exemptions to reserve fee and not having to use vacation weeks (see below) are:

- During the Christmas holidays
- JK/K and Before/After school programs for summer months.

Vacation: All families are eligible for 2 weeks vacation (4 consecutive days off) per calendar year (Jan-Dec). Families who use more than the two (2) weeks' vacation are responsible to reserve their enrolment status. Families who begin in July are entitled to one (1) week vacation.

Closure: GTFRC will be closed: Family Day, Good Friday, Victoria Day, Canada Day, Civic Holiday, Labour Day, Thanksgiving Day and the week Christmas falls on.

Sick Credits/Penalty fees – There is no reimbursement for cancelled days. Parents only receive credits for the days following the first day when their child is sick. Parents are asked to let the office know when the child is returning.

Penalty fee of \$ 20.00 will be applied for early drop off or late pick up. For late payments a 2% service charge will be levied on overdue accounts

Multiple Child Discount - A 10% discount will be applied to the eldest child's rate for families with more than one child in attendance.

Early Learning Program: ELP is available from Sept. - June excluding Christmas and March break holidays. All preschool children between the ages of 2 ½ - 4 years are eligible for the ELP credit. Please see the office for further details.

Fees for Field trips/swim & skating: Parents will be notified for the child's cost to participate.

To inquire about Child care Subsidy please call 519.351.1228

